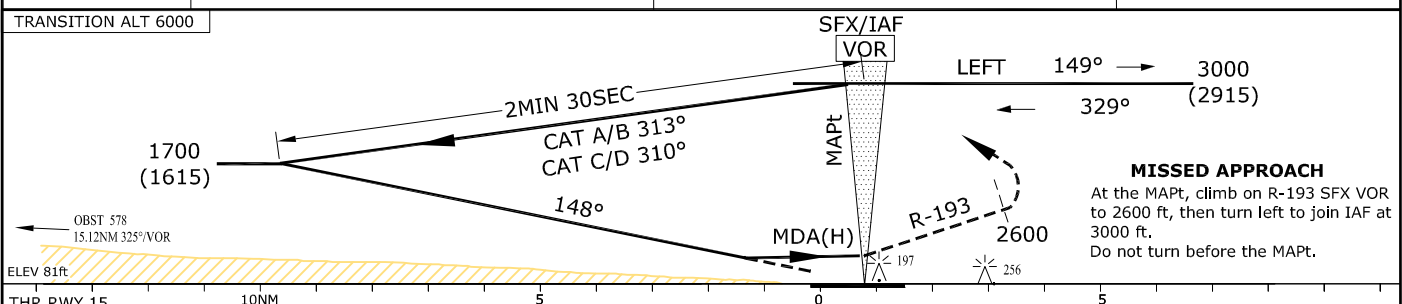
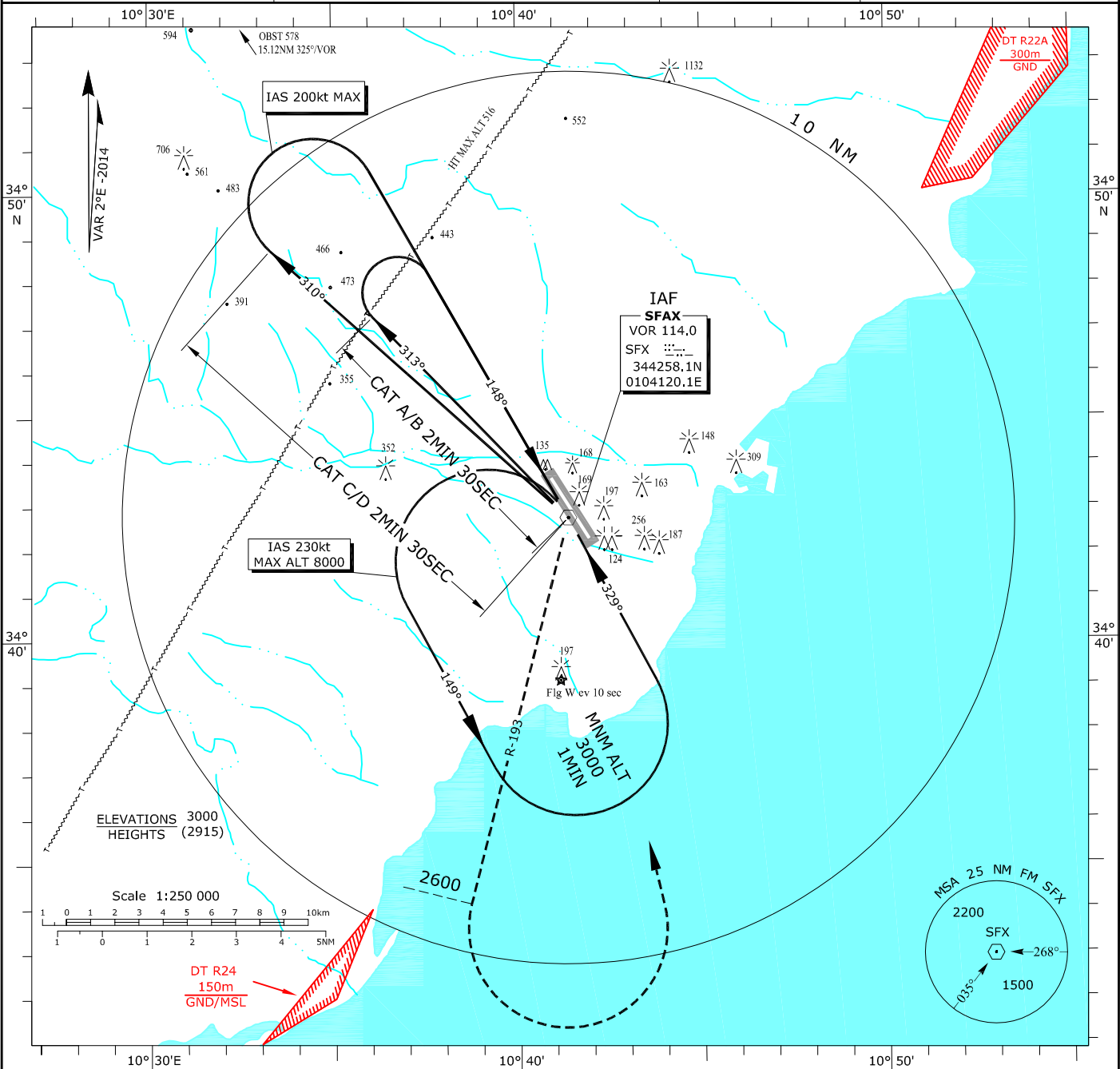


INSTRUMENT APPROACH CHART ICAO	AD ELEV 85ft	THR ELEV 81ft	TWR 120.15 APP 123.7	SFAX-Thyna VOR RWY 15
	HEIGHTS ARE RELATED TO AD BEARINGS ARE MAGNETIC ALTITUDES AND HEIGHTS IN ft			



TRANSITION ALT 6000		SFX/IAF VOR			
		LEFT 149° → 3000 (2915)			
		← 329°			
		MAPT			
		MDA(H)			
		R-193			
		2600			
		197			
		256			
		10NM			
		5			
		0			
		5			
		10NM			
		THR RWY 15			
		ELEV 81ft			
		OBST 578 15.12NM 325° VOR			
		1700 (1615)			
		2MIN 30SEC			
		CAT A/B 313°			
		CAT C/D 310°			
		148°			
		197			
		256			
		10NM			
		5			
		0			
		5			
		10NM			
		THR RWY 15			
		ELEV 81ft			
		OBST 578 15.12NM 325° VOR			
		1700 (1615)			
		2MIN 30SEC			
		CAT A/B 313°			
		CAT C/D 310°			
		148°			
		197			
		256			
		10NM			
		5			
		0			
		5			
		10NM			
		THR RWY 15			
		ELEV 81ft			
		OBST 578 15.12NM 325° VOR			
		1700 (1615)			
		2MIN 30SEC			
		CAT A/B 313°			
		CAT C/D 310°			
		148°			
		197			
		256			
		10NM			
		5			
		0			
		5			
		10NM			
		THR RWY 15			
		ELEV 81ft			
		OBST 578 15.12NM 325° VOR			
		1700 (1615)			
		2MIN 30SEC			
		CAT A/B 313°			
		CAT C/D 310°			
		148°			
		197			
		256			
		10NM			
		5			
		0			
		5			
		10NM			
		THR RWY 15			
		ELEV 81ft			
		OBST 578 15.12NM 325° VOR			
		1700 (1615)			
		2MIN 30SEC			
		CAT A/B 313°			
		CAT C/D 310°			
		148°			
		197			
		256			
		10NM			
		5			
		0			
		5			
		10NM			
		THR RWY 15			
		ELEV 81ft			
		OBST 578 15.12NM 325° VOR			
		1700 (1615)			
		2MIN 30SEC			
		CAT A/B 313°			
		CAT C/D 310°			
		148°			
		197			
		256			
		10NM			
		5			
		0			
		5			
		10NM			
		THR RWY 15			
		ELEV 81ft			
		OBST 578 15.12NM 325° VOR			
		1700 (1615)			
		2MIN 30SEC			
		CAT A/B 313°			
		CAT C/D 310°			
		148°			
		197			
		256			
		10NM			
		5			
		0			
		5			
		10NM			
		THR RWY 15			
		ELEV 81ft			
		OBST 578 15.12NM 325° VOR			
		1700 (1615)			
		2MIN 30SEC			
		CAT A/B 313°			
		CAT C/D 310°			
		148°			
		197			
		256			
		10NM			
		5			
		0			
		5			
		10NM			
		THR RWY 15			
		ELEV 81ft			
		OBST 578 15.12NM 325° VOR			
		1700 (1615)			
		2MIN 30SEC			
		CAT A/B 313°			
		CAT C/D 310°			
		148°			
		197			
		256			
		10NM			
		5			
		0			
		5			
		10NM			
		THR RWY 15			
		ELEV 81ft			
		OBST 578 15.12NM 325° VOR			
		1700 (1615)			
		2MIN 30SEC			
		CAT A/B 313°			
		CAT C/D 310°			
		148°			
		197			
		256			
		10NM			
		5			
		0			
		5			
		10NM			
		THR RWY 15			
		ELEV 81ft			
		OBST 578 15.12NM 325° VOR			
		1700 (1615)			
		2MIN 30SEC			
		CAT A/B 313°			
		CAT C/D 310°			
		148°			
		197			
		256			
		10NM			
		5			
		0			
		5			
		10NM			
		THR RWY 15			
		ELEV 81ft			
		OBST 578 15.12NM 325° VOR			
		1700 (1615)			
		2MIN 30SEC			
		CAT A/B 313°			
		CAT C/D 310°			
		148°			
		197			
		256			
		10NM			
		5			
		0			
		5			
		10NM			
		THR RWY 15			
		ELEV 81ft			
		OBST 578 15.12NM 325° VOR			
		1700 (1615)			
		2MIN 30SEC			
		CAT A/B 313°			
		CAT C/D 310°			
		148°			
		197			
		256			
		10NM			
		5			
		0			
		5			
		10NM			
		THR RWY 15			
		ELEV 81ft			
		OBST 578 15.12NM 325° VOR			
		1700 (1615)			
		2MIN 30SEC			
		CAT A/B 313°			
		CAT C/D 310°			
		148°			
		197			
		256			
		10NM			
		5			
		0			
		5			
		10NM			
		THR RWY 15			
		ELEV 81ft			
		OBST 578 15.12NM 325° VOR			
		1700 (1615)			
		2MIN 30SEC			
		CAT A/B 313°			
		CAT C/D 310°			
		148°			
		197			
		256			
		10NM			
		5			
		0			
		5			
		10NM			
		THR RWY 15			
		ELEV 81ft			
		OBST 578 15.12NM 325° VOR			
		1700 (1615)			
		2MIN 30SEC			
		CAT A/B 313°			
		CAT C/D 310°			
		148°			
		197			
		256			
		10NM			
		5			
		0			
		5			
		10NM			
		THR RWY 15			
		ELEV 81ft			
		OBST 578 15.12NM 325° VOR			
		1700 (1615)			